



### STEP 1 – PRIOR TO INSTALLATION

- A) Enthuze only approves installing the flares according to these written instructions with the hardware provided. WARNING:** Failure to install according to these instructions will invalidate the warranty. This includes, but is not limited to using alternative installation methods, hardware, or materials. **DO NOT USE:** Loctite, SuperGlue, or similar products on the hardware or the flares.
- B) Fit:** Verify the fit of the flares to vehicle. (Some filing, sanding, or cutting may be necessary to ensure proper fit).
- C) Painting:** (Optional) if paint is desired it must be done prior to installing flares on vehicle. Clean outer surface with a good grade degreaser. **DO NOT USE LACQUER THINNER OR ENAMEL REDUCER AS A DEGREASER.** Wipe outer surface thoroughly with a tack rag prior to paint. Application of plastic adhesion promoter for ABS plastic as per your paint system manufacturer’s recommendations is required. Paint flares using a high quality enamel, or polyurethane automotive paint. If painting edge trim (not recommended), use a flex additive.
- D) Performance:** Using larger Tires may increase the area required to turn the vehicle. Some Tire/Rim combinations may require lowering bump stops and or installing steering stops to prevent tire from contacting flare.
- E) Exhaust System:** Modifications may be necessary to maintain a minimum 4” clearance between flares and exhaust pipes. (Exhaust gases should not vent directly onto flares)
- F) Metal Protection:** All exposed fasteners and bare metal should be treated with rust resistant paint **BEFORE** installing flares. Spray inner fender wells with undercoating **AFTER** flare attachments have been completed.
- G) Decals:** Flares may interfere with existing decals on vehicle. If you wish, remove decals prior to installation of flares.
- H) Care & Cleaning:** Enthuze fender flares are built to last; any detergent you use to wash your vehicle is sufficient to clean the flare. Do not use any harsh abrasive detergents.

## Fender Flares

### Set of 4 - ENT91100

IS - ENT94220F  
Rev-4 07/05/2018

#### TOOLS FOR EASY INSTALLATION:

- Utility Knife
- #2 Phillips Driver
- 1/2” Wrench
- Socket Wrench
- 7/32” Socket
- 9/32” Socket
- 10mm Socket
- Grease Pencil

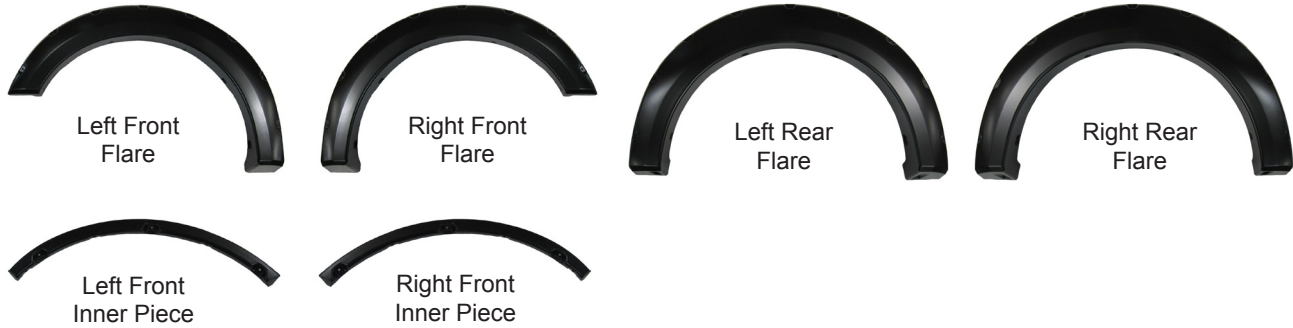
**PLEASE READ:** Dirt and debris can become lodged between the fender flares and the vehicle’s fenders, causing scratching and paint wear from vibration. Enthuze is not responsible for any damage, and the installation of our fender flares is done with the buyer’s understanding that this scratching and paint wear may occur.

**LIMITED LIFETIME WARRANTY WITH PROOF OF PURCHASE.**  
**CONTACT WWW.ENTHUZE.CA**

### Included in Hardware Kit:

1. 	2. 	3. 	4. 	5. 	6. 	7. 
Small “U” Clip Wide Mouth, 6 pcs	#10 x 5/8” Phillips SS Truss Screw, 14 pcs	Long “U” Clip, Magni 565 8 pcs	1” x1.5” x.06” Blk 3M Foam Tab, 8 pcs	Dacromet “S” Spring Clip, 2 pcs	10 x 5/16 Phillips Truss Screw, 2 pcs	1” x1.5” x.01” Black Mylar Tab, 2 pcs
8. 	9. 	10. 	11. 	12. 	13. 	14. 
1/4” Black Nylon Retainer, 2 pcs	5/16 x 18 x 3/8” SS Torx Screw, 34 pcs	.320 x .700 x .03 SS Washer, 34 pcs	5/16-18 Jam Fin. Nylock Nut, 34 pcs	T-45 Torx Bit, 1 pc	Edge Trim Tool, 1 pc	EX4008 Wiper Style Edge Trim, 338 inches

# Component List:



***If your flares already have the edge trim and pocket hardware installed, skip to Front Flare Installation Step 4.***

## STEP 2 - EDGE TRIM INSTALLATION

A. Peel two to three inches of red vinyl backing away from Edge Trim (Item 14) tape. Applying the adhesive side of the edge trim to the inner side of the flare, affix the edge trim to the top edge of the flare (the portion that comes in contact with the vehicle).

B. Press edge trim into place along the top edge of the flare in one-foot increments, pulling red vinyl backing free as you continue to work your way around the top edge of the flare. Trim flush with ends of flare.



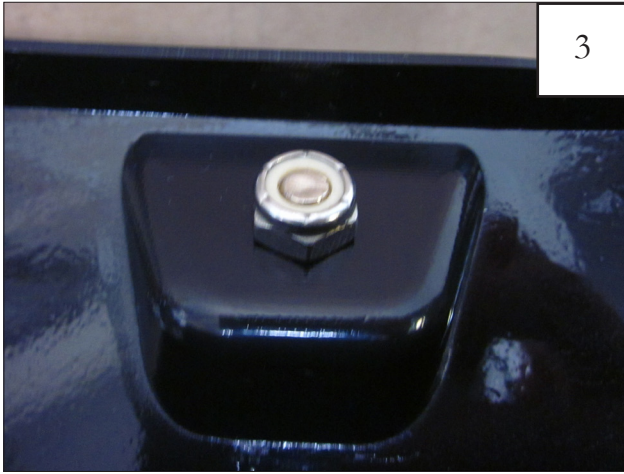
## Pocket Hardware Installation:



Put a Washer (Item 10) on each Bolt (Item 9).



Put each Bolt/Washer combination through a pocket hole in the flare, Bolt head and Washer on the outside.



Place a Nut (Item 11) over the end of each Bolt and tighten, using a 1/2" wrench for the Nut and the supplied Torx Bit (Item 12) for the Bolt. Repeat for remaining pockets.

## Front Flare Installation Procedures (Passenger's Side):



Remove six factory screws with a 7mm socket wrench. Save screws for reinstallation.

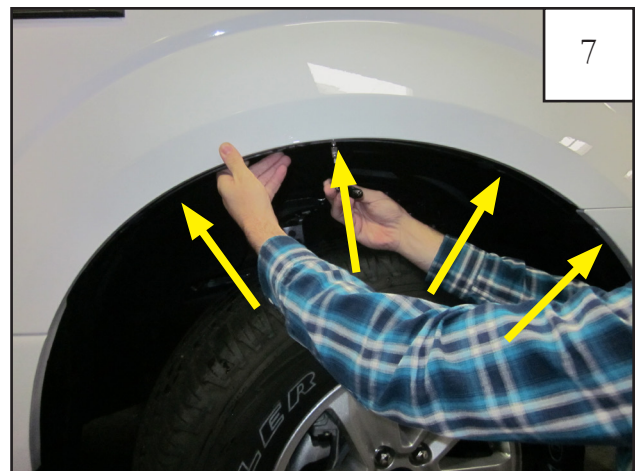
**Note:** For Platinum Edition, after you remove the factory flare, there are additional screws to be removed. These screws will be used for reinstallation.



Attach 3 "U"clips (Item 1) to the inner bracket as shown.



Line up the holes in the inner piece with the three uppermost factory holes. **NOTE:** Driver's side inner piece is marked with an "LR" and passenger's side inner piece is marked with an "RR".



Using a 7mm socket wrench, reinstall the factory screws through the inner piece.



Position flare on fender, pressing inward on the flare, line up the flare mounting holes with the mounting clips on the inner piece. Install 3 Phillips Truss Screws (Item 2) through the flare and into the clips on the inner piece. Do not tighten. (3 locations)



Still holding flare to fender, re-install remaining factory screws removed in Step 4 using 7mm socket and wrench. Tighten all screws.

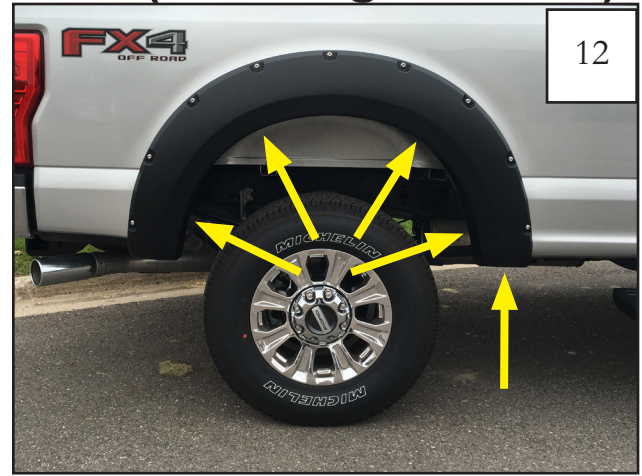


Completed front flare installation.

# Rear Flare Installation Procedures (Passenger's Side):



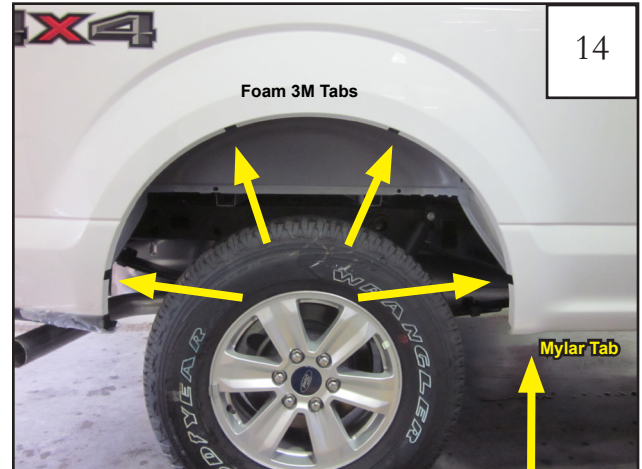
Remove factory fastener from rear of wheel well. Thoroughly clean the vehicle sheet metal and inner flange prior to installation.



Hold flare to vehicle and mark five flare hole locations with a grease pencil.



Wrap a Foam Tab (Item 4) around the wheel well sheet metal, centered over each of the upper four marks made in Step 15. Place a Mylar Tab (Item 7) at the mark made on the lower front of the wheel well (see step 14).



Tab locations



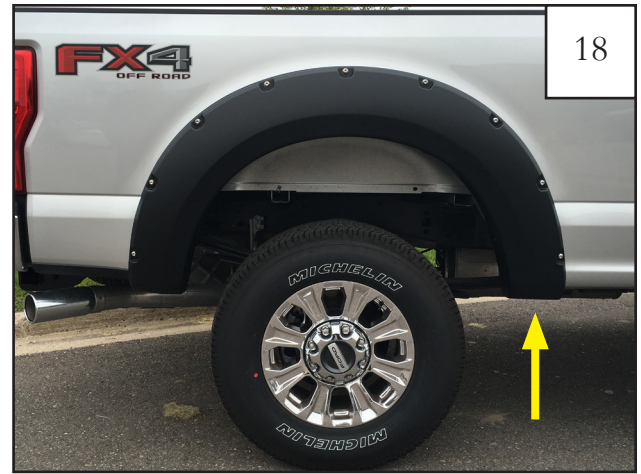
Install a Clip (Item 3) over each of the four Tabs (Item 4) placed over the upper 4 marks made in Step 16.



Install a supplied "S" clip (Item 5) over the mylar tab installed at the lower front of the rear wheel well.



17 While holding flare to vehicle, start supplied screws (Item 2) through the four topmost mounting holes in flare and into the clips installed in Step 18.



18 Start a supplied screw (Item 6) through the flare into the clip installed in Step 19. Tighten all screws.

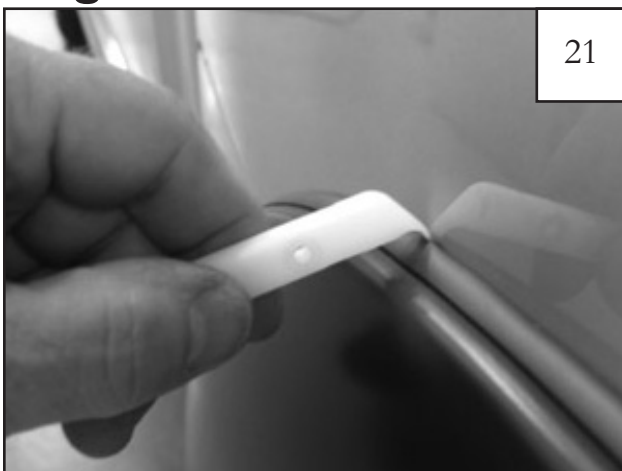


19 Install supplied push retainer (RV1-P0001) into flare and through factory hole at rear of wheel well.



20 Completed rear flare installation.

## Edge Trim Tool Procedures:



21 Using supplied Edge Trim Tool (Item 13), seat edge trim against vehicle by hooking curved end under edge trim at one end of flare. Next, slide around outer edge of flare to the other end.



22 Using flat end of supplied Edge Trim Tool (Item 13), seat edge trim against flare by inserting straight end between edge trim and flare at one end. Next, slide around entire edge to the other end.